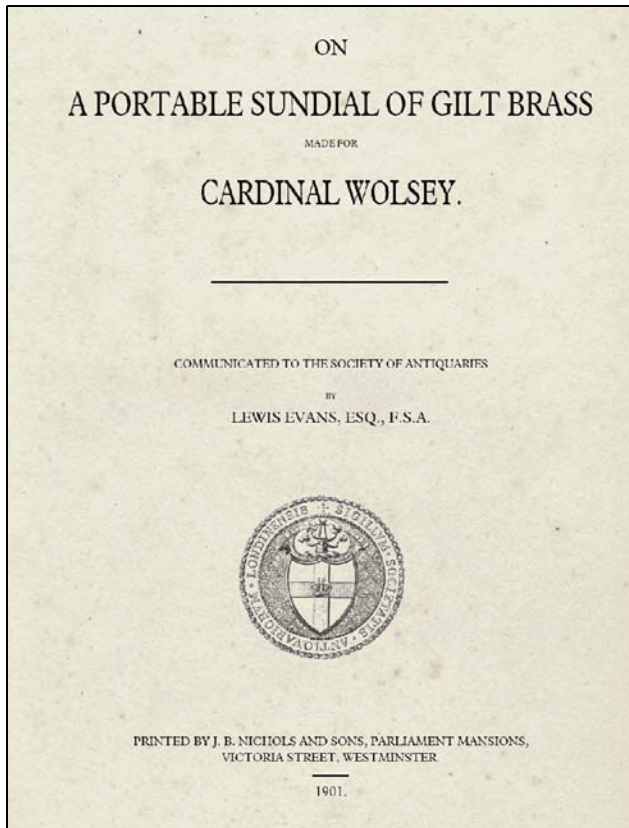


# LEWIS EVANS, A SUNDIAL MADE FOR CARDINAL WOLSEY

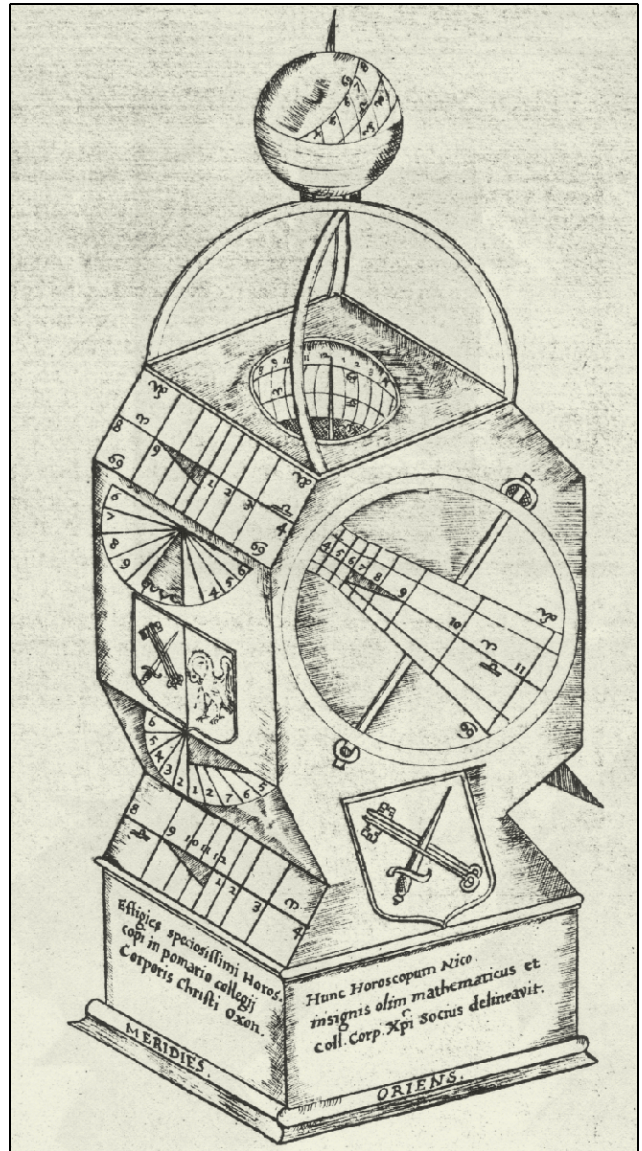
London 1901



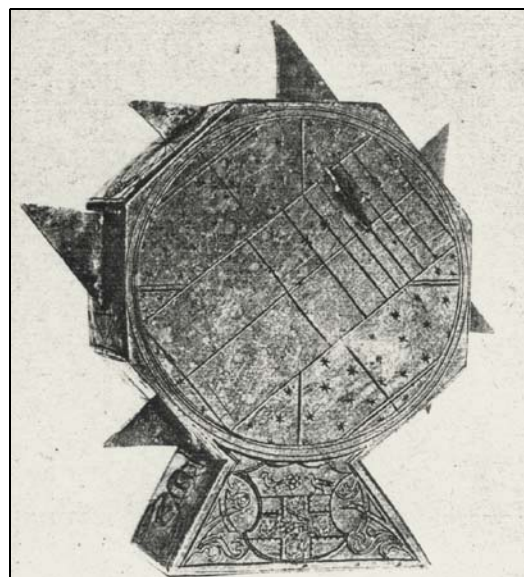
"ON A PORTABLE SUNDIAL OF GILT BRASS MADE FOR CARDINAL WOLSEY". It was Read 21st February 1901. It is a small booklet that starts with the text:

THE dial exhibited, is interesting, both as a good example of a combination of dials, which was in the first half of the sixteenth century considered to be the perfection of the diallist art, and of which early examples are almost unknown, and also because it was made for Cardinal Wolsey. Nothing is known of its history, but it is said to have come from a village not far from Peterborough, and it was brought to me in London early in 1900.

The instrument consists of a group of nine dials arranged on a hollow gilt brass block, which is  $3\frac{5}{16}$  inches high,  $2\frac{1}{2}$  inches wide and  $1\frac{9}{16}$  inch thick. Its two sides are formed by parallel plates, which are  $1\frac{7}{8}$  inch wide at the base and taper to a width of 1 inch at a height of  $\frac{3}{4}$  inch, above which point they expand into slightly irregular octagons measuring about 1 inch on each side. These plates are  $1\frac{9}{16}$  inch apart, and are connected together by flat plates; each of these smaller plates measures about  $1\frac{9}{16}$  inch by 1 inch, with the exception of the base which is  $1\frac{9}{16}$  inch by  $1\frac{7}{8}$  inch.



*A Drawing of the Dial*



*A Photograph of the Dial*

Number of Pages: 7

Illustrations: 1 Drawing and 3 Photographs