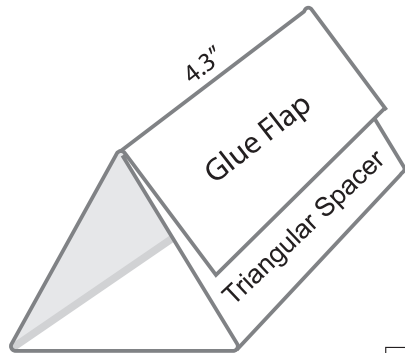


Multi-Dial Support 50° (US Northern Version)

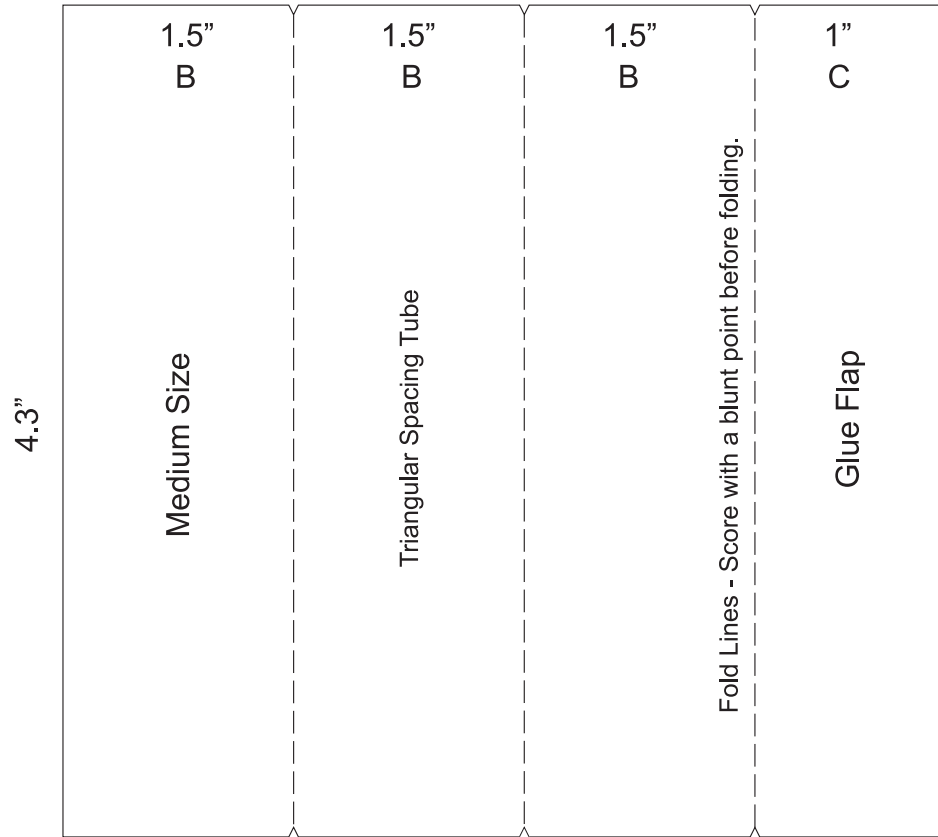
(Designed by Tony Moss B.Sc. D.L.C. 2014)

(Back)

Make extra spacers to fit the supports for your latitude by varying dimensions B & C.



Any convenient size



This critical dimension assumes the dial is made from cereal packet card approx' 1mm thick.

1.2" (30.5mm)

50°

