

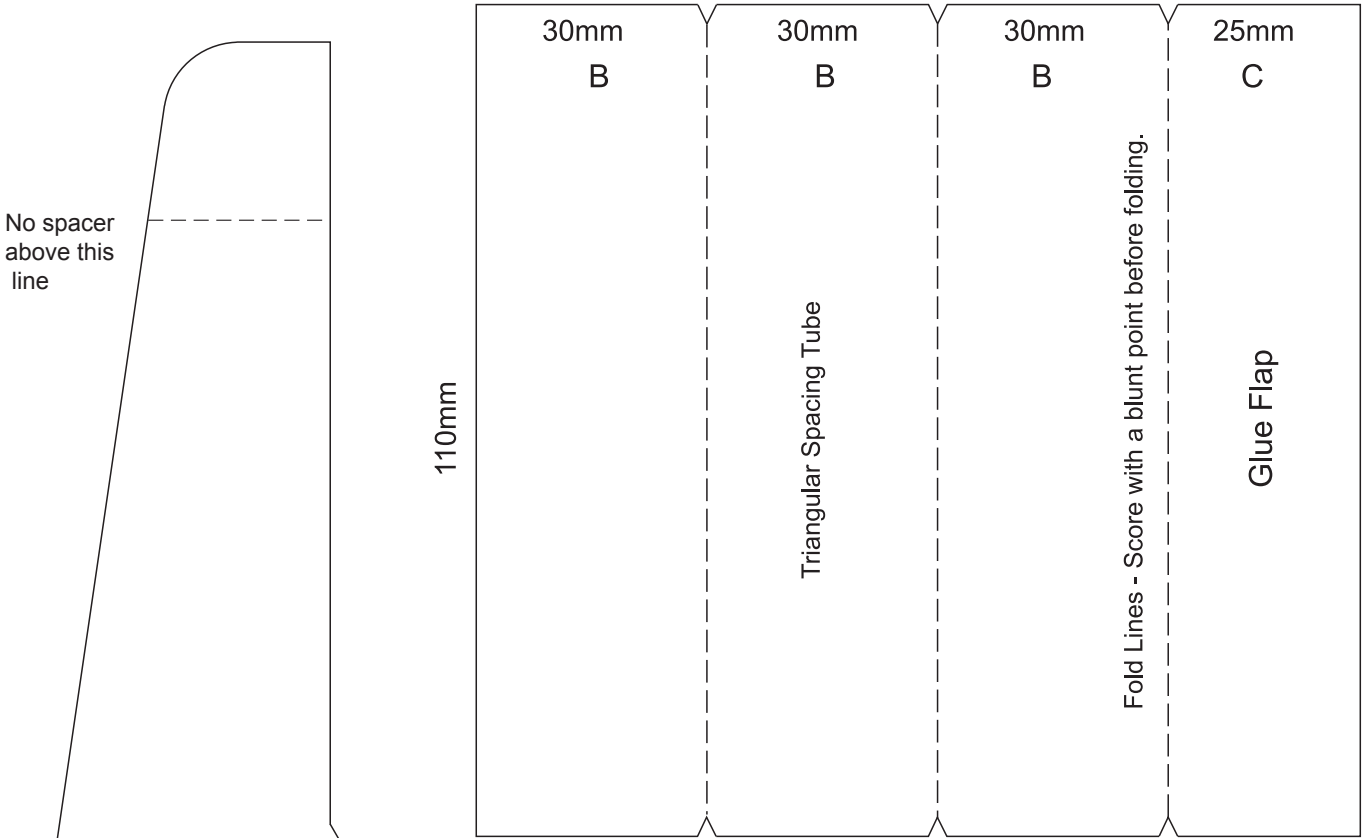
Multi-Dial Support 60° (UK Version)

(Designed by Tony Moss B.Sc. D.L.C. 2014)

Drawn Full Size - may be scaled.

(Front)

Make extra spacers to fit the supports for your latitude by varying dimensions B & C.



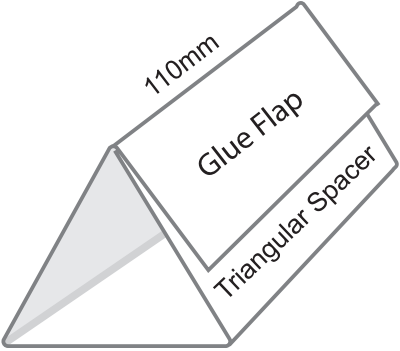
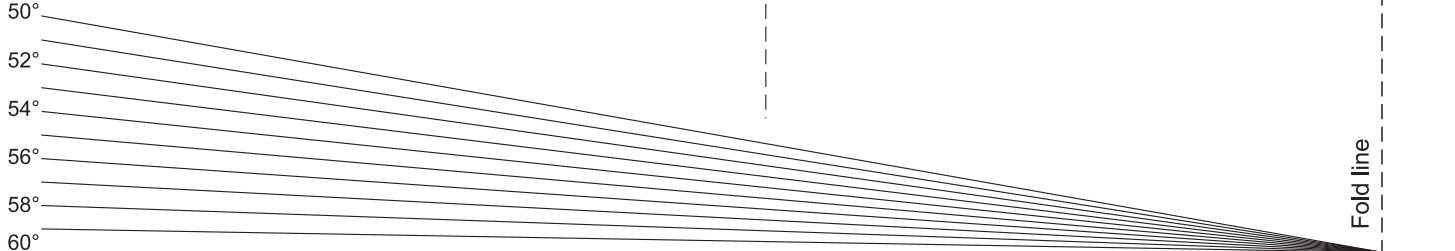
Vee notches used as templet.

Fold Lines - Score with a blunt point before folding.

This critical dimension assumes the dial is made from cereal packet card approx' 1mm thick.

34mm
60°

No spacer is side of line.



Any convenient size